

Issued: 04/23/2021
RE: Technical Bulletin – Black Accessories for ROCKWOOL Cavityrock® Black

ROCKWOOL Cavityrock® Black is designed, tested and approved for use in cavity wall and rainscreen systems with wide joints in the cladding leaving the insulation behind visible. The black finish is designed for aesthetic appeal resulting in any visible insulation between the cladding joints appearing black rather than the natural insulation colour.

TAPES

ROCKWOOL Cavityrock® Black is vapor permable and does not act as an air barrier. ROCKWOOL does not require the use of tape to seal the joints of ROCKWOOL Cavityrock® Black boards in a rainscreen application. However, if the use of a tape is desired, the three tape options below are examples of products currently available on the market.

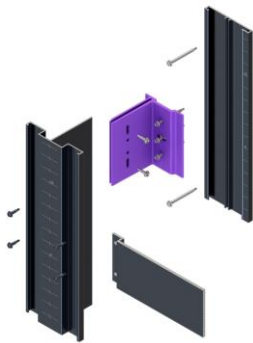
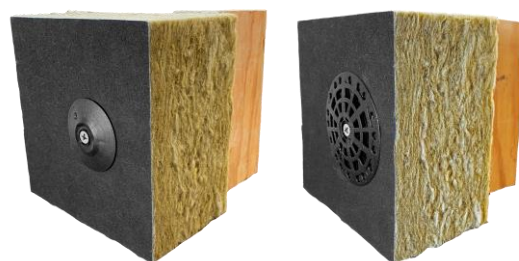
	3M™ Venture Tape™ Woven Patch Tape 442B
	DELTA® FASSADE TAPE 2.5"
	VaproShield® VaproTape


CLADDING ATTACHMENTS ACCESSORIES

ROCKWOOL Cavityrock® Black can easily be installed with any cladding attachment system – i.e. intermittent clips and girts – that provides a ventilated cavity behind the cladding. There are several proprietary or generic insulation retention fasteners that can be used. For further guidance on fasteners and/or attachments, please refer to [ROCKWOOL's Fastener Guidelines](#).

The below manufacturers produce attachment accessories that are available in a black finish to integrate with the aesthetic intention.

- **Cascadia**
- **CL-TALON®**
- **ECO CLADDING**
- **EJOT**
- **GEMCO**
- **ITW – Ramset**
- **Knight Wall**
- **Rodenhouse – Trufast**
- **SFS NVELOPE**
- **SMARTci**

**Cascadia****Knight Wall****CL-TALON®****Rodenhouse – Trufast**

 <p>EJOT</p>	 <p>SMARTci</p>
 <p>ITW – Ramset</p>	 <p>GEMCO</p>

As an alternative option to achieve a black finish, HILTI X-IE-G 6 or Ramset Insulfast™ fastener plates/washers, which are only available in white or grey, may be painted using a fast-drying black enamel spray paint.

For more information, please contact the ROCKWOOL Technical Support at the phone number or email address below.

ROCKWOOL Technical Support

1-877-823-9790

contactus@rockwool.com