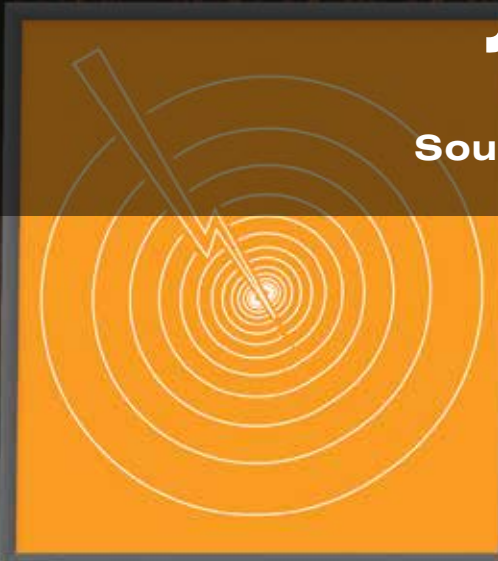


CertainTeed

silentFX 
QuickCut

Sound Wall Assembly Guide



CertainTeed
SAINT-GOBAIN

Gypsum

SilentFX® QuickCut Fire and Acoustic Assemblies

SilentFX® QuickCut is an excellent acoustic solution for meeting Sound Transmission Class (STC) specifications without complex techniques such as isolation clips or resilient channels. It can also help reduce material usage versus traditional gypsum systems that require high sound attenuation.

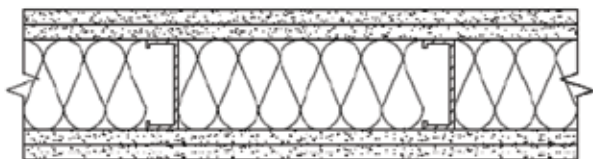
MORE RELIABLE THAN CLIPS AND CHANNELS

Clips and resilient channel can easily be short-circuited during the construction process and even afterwards, during picture hanging or pressing of heavy objects against the wall, negatively affecting acoustic performance. These risks are eliminated when using SilentFX® QuickCut, thus providing more consistent acoustic performance. When used in systems with resilient channel, SilentFX® QuickCut, can reduce the negative effect of short circuits.

SQUARE-FOOT SAVINGS

The high acoustic performance of SilentFX® QuickCut makes it possible to build effective noise-reducing walls with less material, gaining valuable square footage, and saving both construction time and material cost. Less material used also means a more sustainable structure in keeping with today's green building practices.

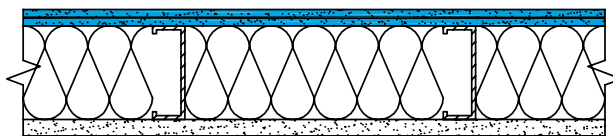
DOUBLE LAYER CERTAINTED 5/8" TYPE X



DOUBLE LAYER CERTAINTED 5/8" TYPE X

Thickness: 6-1/8"
Sound test: STC 55

SINGLE LAYER SILENTFX® QUICKCUT 5/8" TYPE X



SINGLE LAYER CERTAINTED 5/8" TYPE X

Thickness: 4-7/8"
Sound test: STC 55

Visit http://www.certainteed.com/cad_gypsum.aspx for more assemblies.

1/2" [12.7 MM] SILENTFX® QUICKCUT – WOOD STUD SYSTEMS

A 2"x4" [38x89 mm] wood studs 16" [406 mm] o.c.

ONE SIDE

B 1/2" [12.7 mm] SilentFX®* applied with 1-1/4" [32 mm] type W screws 16" [406 mm] o.c.

OPPOSITE SIDE

C 1/2" [12.7 mm] CertainTeed Regular applied with 1-1/4" [32 mm] type W screws 16" [406 mm] o.c.
All joints staggered.

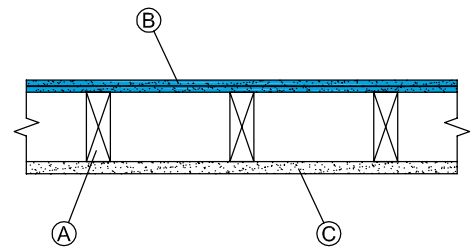
STC RATING

38

OL 11-0626

FIRE RATING

N/A



A 2"x4" [38x89 mm] wood studs 16" [406 mm] o.c.

ONE SIDE

B 1/2" [12.7 mm] SilentFX®* applied with 1-1/4" [32 mm] type W screws 16" [406 mm] o.c.

OPPOSITE SIDE

C 1/2" [12.7 mm] CertainTeed Regular applied with 1-1/4" [32 mm] type W screws 16" [406 mm] o.c.
All joints staggered.

D 3-1/2" [90 mm] CertainTeed Thermal & Acoustical Fiber Glass Insulation or equivalent.

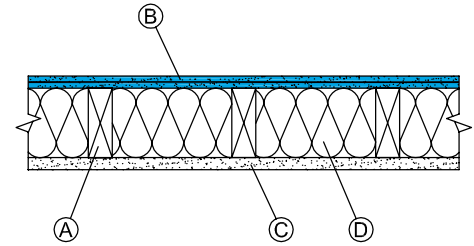
STC RATING

42

OL 11-0630

FIRE RATING

N/A



A 2"x4" [38x89 mm] wood studs 24" [610 mm] o.c.

ONE SIDE

B Base layer 1/2" [12.7 mm] CertainTeed Regular applied with 1-1/4" [32 mm] type W screws 16" [406 mm] o.c.

C Face layer 1/2" [12.7 mm] SilentFX®* applied with 1-5/8" [41 mm] type W screws 16" [406 mm] o.c.

OPPOSITE SIDE

D 1/2" [12.7 mm] CertainTeed Regular applied with 1-1/4" [32 mm] type W screws 16" [406 mm] o.c.
All joints staggered. No insulation in the cavity.

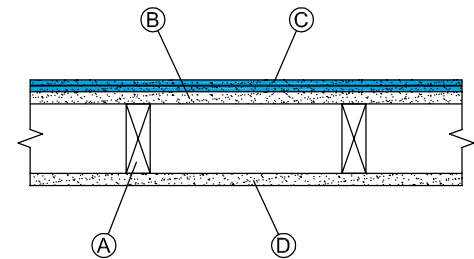
STC RATING

42

OL 10-0906

FIRE RATING

N/A



A 2"x4" [38x89 mm] wood studs 24" [610 mm] o.c.

ONE SIDE

B 1/2" [12.7 mm] SilentFX®* applied with 1-1/4" [32 mm] type W screws 16" [406 mm] o.c.

OPPOSITE SIDE

C 1/2" [12.7 mm] CertainTeed Regular applied with 1-1/4" [32 mm] type W screws 16" [406 mm] o.c.
All joints staggered.

D 3-1/2" [90 mm] CertainTeed Thermal & Acoustical Fiber Glass Insulation or equivalent.

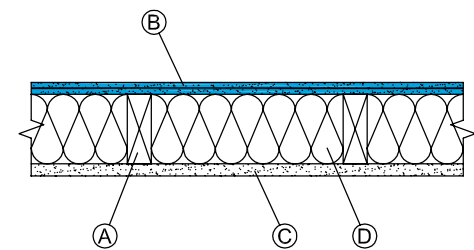
STC RATING

49

OL 10-0904

FIRE RATING

N/A



A 2"x4" [38x89 mm] wood studs 24" [610 mm] o.c.

ONE SIDE

B Base layer 5/8" [15.9 mm] CertainTeed Type X applied with 1-1/4" [32 mm] type W screws 12" [300 mm] o.c.

C Face layer 1/2" [12.7 mm] SilentFX[®]** applied with 1-5/8" [41 mm] type W screws 16" [406 mm] o.c.

OPPOSITE SIDE

D 5/8" [15.9 mm] CertainTeed Type X applied with 1-1/4" [32 mm] type W screws 12" [300 mm] o.c.
All joints staggered.

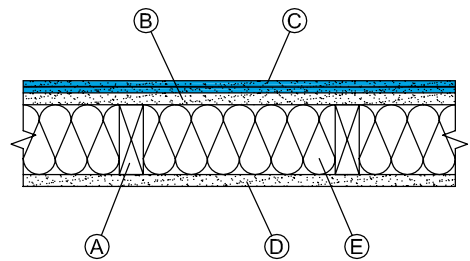
E 3-1/2" [90 mm] CertainTeed Thermal & Acoustical Fiber Glass Insulation or equivalent.

STC RATING

50
OL 10-1021

FIRE RATING

1 hr.
UL/cUL U309
GA WP 3510



A 2"x4" [38x89 mm] wood studs 24" [610 mm] o.c.

ONE SIDE

B Base layer 1/2" [12.7 mm] CertainTeed Regular applied with 1-1/4" [32 mm] type W screws 16" [406 mm] o.c.

C Face layer 1/2" [12.7 mm] SilentFX[®]** applied with 1-5/8" [41 mm] type W screws 16" [406 mm] o.c.

OPPOSITE SIDE

D 1/2" [12.7 mm] CertainTeed Regular applied with 1-1/4" [32 mm] type W screws 16" [406 mm] o.c.
All joints staggered.

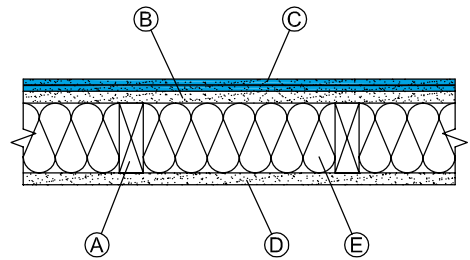
E 3-1/2" [90 mm] CertainTeed Thermal & Acoustical Fiber Glass Insulation or equivalent.

STC RATING

50
OL 10-0905

FIRE RATING

N/A



A 2"x4" [38x89 mm] wood studs 24" [610 mm] o.c.

ONE SIDE

B 1/2" [12.7 mm] SilentFX[®]** applied with 1-5/8" [32 mm] type W screws 16" [406 mm] o.c.

OPPOSITE SIDE

C 1/2" [12.7 mm] SilentFX[®]** applied with 1-5/8" [41 mm] type W screws 16" [406 mm] o.c.
All joints staggered.

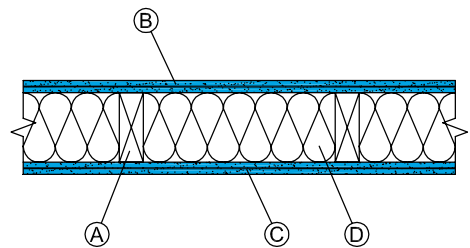
D 3-1/2" [90 mm] CertainTeed Thermal & Acoustical Fiber Glass Insulation or equivalent.

STC RATING

52
OL 10-0901

FIRE RATING

N/A



5/8" [15.9 MM] SILENTFX® QUICKCUT – WOOD STUD SYSTEMS

A 2"x4" [38x89 mm] wood studs 24" [610 mm] o.c.

ONE SIDE

B 5/8" [15.9 mm] SilentFX®** applied with 1-5/8" [41 mm] type W screws 12" [300 mm] o.c.

OPPOSITE SIDE

C 1/2" [12.7 mm] CertainTeed Regular applied with 1-1/4" [32 mm] type W screws 12" [300 mm] o.c.

All joints staggered.

D 3-1/2" [90 mm] CertainTeed Thermal & Acoustical Fiber Glass Insulation or equivalent.

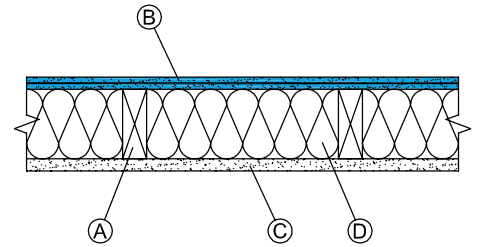
STC RATING

48

OL 10-0806

FIRE RATING

N/A



A 2"x4" [38x89mm] wood studs 24" [610 mm] o.c.

ONE SIDE

B 5/8" [15.9 mm] SilentFX®** applied with 1-1/4" [32 mm] type W screws 12" [300 mm] o.c.

OPPOSITE SIDE

C 5/8" [15.9 mm] SilentFX®** applied with 1-1/4" [32 mm] type W screws 12" [300 mm] o.c.

D 3-1/2" [90 mm] CertainTeed Thermal & Acoustical Fiber Glass Insulation or equivalent

STC RATING

54

OL 15-1110

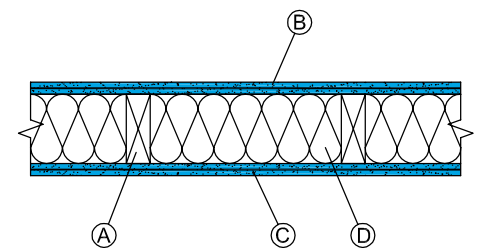
FIRE RATING

1 hr.

UL/cUL U309

ULC W313

GA WP 3510



A 2"x4" [38x89 mm] wood studs 24" [610 mm] o.c.

ONE SIDE

B 5/8" [15.9 mm] SilentFX® QuickCut applied with 1-1/4" [32 mm] type W screws 12" [300 mm] o.c.

OPPOSITE SIDE

C 5/8" [15.9 mm] CertainTeed Type X applied with 1-1/4" [32 mm] type W screws 12" [300 mm] o.c.

All joints staggered.

D 3-1/2" [90 mm] CertainTeed Thermal & Acoustical Fiber Glass Insulation or equivalent.

STC RATING

51

OL 15-0503

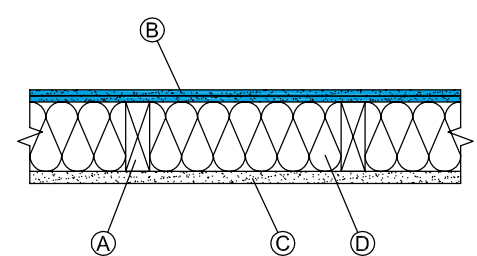
FIRE RATING

1 hr.

UL/cUL U309

ULC W313

GA WP 3510



A 2"x4" [38x89 mm] wood studs 24" [610 mm] o.c.

ONE SIDE

B Resilient channel 24" [610 mm] o.c.

C 5/8" [15.9 mm] SilentFX®** applied with 1" [25 mm] type S screws 12" [300 mm] o.c.

OPPOSITE SIDE

D 5/8" [15.9 mm] CertainTeed Type X applied with 1-5/8" [41 mm] type W screws 12" [300 mm] o.c.

All joints staggered.

E 3-1/2" [90 mm] CertainTeed Thermal & Acoustical Fiber Glass Insulation or equivalent.

STC RATING

56

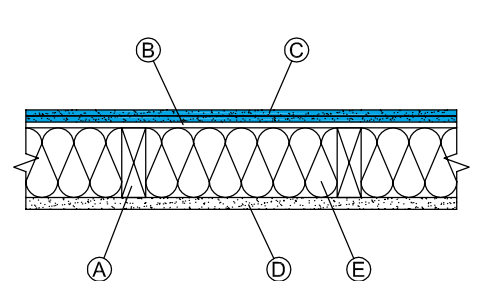
OL 11-0625

FIRE RATING

1 hr.

UL/cUL U309

GA WP 3243



A 2"x4" [38x89 mm] wood studs 24" [610 mm] o.c.

ONE SIDE

B Resilient channel 24" [610 mm] o.c.

C Base layer 5/8" [15.9 mm] SilentFX** applied with 1" [25 mm] type S screws 12" [300 mm] o.c.

D Face layer 5/8" [15.9 mm] CertainTeed Type X applied with 1-5/8" [41 mm] type S screws 12" [300 mm] o.c.

OPPOSITE SIDE

E 5/8" [15.9 mm] CertainTeed Type X applied with 1-1/4" [32 mm] type W screws 12" [300 mm] o.c.
All joints staggered.

F 3-1/2" [90 mm] CertainTeed Thermal & Acoustical Fiber Glass Insulation or equivalent.

STC RATING

59

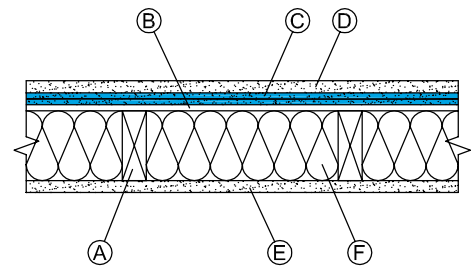
OL 10-1020

FIRE RATING

1 hr.

UL/cUL U305

GA WP 3243



A 2"x4" [38x89 mm] wood studs 16" [406 mm] o.c.

ONE SIDE

B Resilient channel 24" [610 mm] o.c.

C 5/8" [15.9 mm] SilentFX** applied with 1" [25 mm] type S screws 12" [300 mm] o.c.

OPPOSITE SIDE

D 5/8" [15.9 mm] CertainTeed Type X applied with 1-1/4" [32 mm] type W screws 12" [300 mm] o.c.
All joints staggered.

E 3-1/2" [90 mm] CertainTeed Thermal & Acoustical Fiber Glass Insulation or equivalent.

STC RATING

51

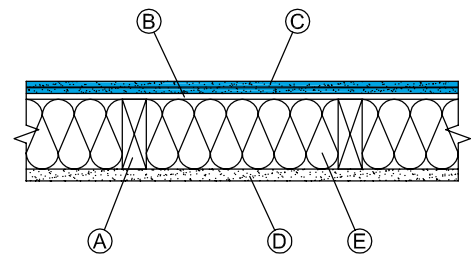
OL 10-1013

FIRE RATING

1 hr.

UL/cUL U305

GA WP 3243



A 2"x4" [38x89 mm] wood studs 16" [406 mm] o.c.

ONE SIDE

B Resilient channel 24" [610 mm] o.c.

C Base layer 5/8" [15.9 mm] SilentFX** applied with 1" [25 mm] type S screws 12" [300 mm] o.c.

D Face layer 5/8" [15.9 mm] CertainTeed Type X applied with 1-5/8" [41 mm] type S screws 12" [300 mm] o.c.

OPPOSITE SIDE

E 5/8" [15.9 mm] CertainTeed Type X applied with 1-1/4" [32 mm] type W screws 12" [300 mm] o.c.
All joints staggered.

F 3-1/2" [90 mm] CertainTeed Thermal & Acoustical Fiber Glass Insulation or equivalent.

STC RATING

57

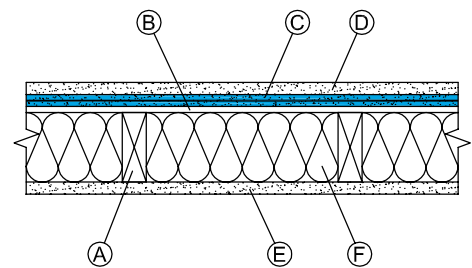
OL 10-1015

FIRE RATING

1 hr.

UL/cUL U305

GA WP 3243



A 2"x4" [38x89 mm] wood studs 24" [610 mm] o.c.

ONE SIDE

B Resilient channel 24" [610 mm] o.c.

C 5/8" [15.9 mm] SilentFX** applied with 1" [25 mm] type S screws 12" [300 mm] o.c.

OPPOSITE SIDE

D 5/8" [15.9 mm] SilentFX** applied with 1-1/4" [32 mm] type W screws 12" [300 mm] o.c.
All joints staggered.

E 3-1/2" [90 mm] CertainTeed Thermal & Acoustical Fiber Glass Insulation or equivalent.

STC RATING

59

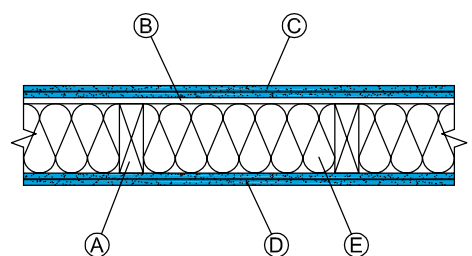
OL 11-0624

FIRE RATING

1 hr.

UL/cUL U309

GA WP 3243



- A** Double row 2"x4" [38x89 mm] wood studs on separate plates, 16" [406 mm] o.c. with 1" [25 mm] gap.

ONE SIDE

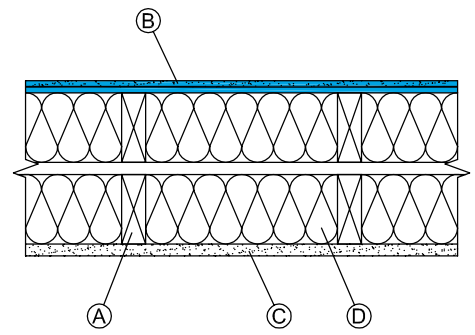
- B** 5/8" [15.9 mm] SilentFX®** applied with 1-1/4" [32 mm] type W screws 12" [300 mm] o.c.

OPPOSITE SIDE

- C** 5/8" [15.9 mm] CertainTeed Type X applied with 1-1/4" [32 mm] type W screws 12" [300 mm] o.c.
All joints staggered.
- D** 3-1/2" [90 mm] CertainTeed Thermal & Acoustical Fiber Glass Insulation or equivalent.

STC RATING
60
OL 10-1017

FIRE RATING
1 hr.
UL/cUL U305
GA WP 3370



- A** Double row 2"x4" [38x89 mm] wood studs on separate plates, 16" [406 mm] o.c. with 1" [25 mm] gap.

ONE SIDE

- B** Base layer 5/8" [15.9 mm] CertainTeed Type X applied with 1-1/4" [32 mm] type W screws 12" [300 mm] o.c.

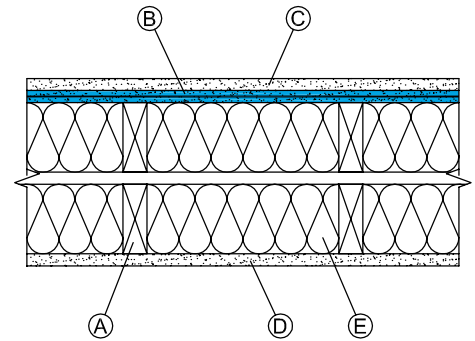
- C** Face layer 5/8" [15.9 mm] SilentFX®** applied with 1-5/8" [41 mm] type W screws 12" [300 mm] o.c.

OPPOSITE SIDE

- D** 5/8" [15.9 mm] CertainTeed Type X applied with 1-1/4" [32 mm] type W screws 12" [300 mm] o.c.
All joints staggered.
- E** 3-1/2" [90 mm] CertainTeed Thermal & Acoustical Fiber Glass Insulation or equivalent.

STC RATING
62
OL 10-1018

FIRE RATING
1 hr.
UL/cUL U305
GA WP 3370



- A** Double row 2"x4" [38x89 mm] wood studs on separate plates, 24" [610 mm] o.c. with 1" [25 mm] gap.

ONE SIDE

- B** Base layer 5/8" [15.9 mm] CertainTeed Type X applied with 1-1/4" [32 mm] type W screws 12" [300 mm] o.c.

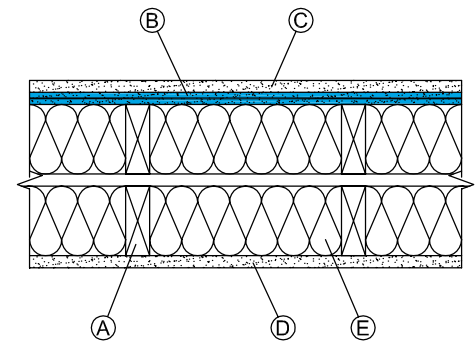
- C** Face layer 5/8" [15.9 mm] SilentFX®** applied with 1-5/8" [41 mm] type W screws 12" [300 mm] o.c.

OPPOSITE SIDE

- D** 5/8" [15.9 mm] CertainTeed Type X applied with 1-1/4" [32 mm] type W screws 12" [300 mm] o.c.
All joints staggered.
- E** 3-1/2" [90 mm] CertainTeed Thermal & Acoustical Fiber Glass Insulation or equivalent.

STC RATING
63
OL 10-0910

FIRE RATING
1 hr.
UL/cUL U309
GA WP 3510



- A** 2"x4" [38x89mm] wood studs 16' [406 mm] o.c. staggered 8' [200 mm] o.c. on 6' [150 mm] plates.

ONE SIDE

- B** 5/8" [15.9 mm] SilentFX®** applied with 1-1/4" [32 mm] type W screws 12' [300 mm] o.c.

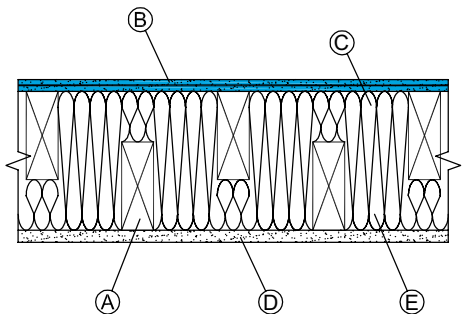
- C** 3-1/2" (90 mm) CertainTeed Thermal & Acoustical Fiber Glass Insulation or equivalent

OPPOSITE SIDE

- D** 5/8" [15.9 mm] CertainTeed Type X applied with 1-1/4" [32 mm] type W screws 12" [300 mm] o.c.
All joints staggered
- E** 3-1/2" [90 mm] CertainTeed Thermal & Acoustical Fiber Glass Insulation or equivalent

STC RATING
55
OL 15-1112

FIRE RATING
1 hr.
UL/cUL U305
UL/cUL U340
ULC W313
GA WP 3371



5/8" [15.9 MM] SILENTFX® QUICKCUT – STEEL STUD SYSTEMS

A 3-5/8" [92 mm] 25 ga. steel studs 24" [610 mm] o.c.

ONE SIDE

B 5/8" [15.9 mm] SilentFX®** applied with 1" [25 mm] type S screws 12" [300 mm] o.c.

OPPOSITE SIDE

C 5/8" [15.9 mm] CertainTeed Type X applied with 1" [25 mm] type S screws 12" [300 mm] o.c.

All joints staggered.

D 3-1/2" [90 mm] CertainTeed Thermal & Acoustical Fiber Glass Insulation or equivalent.

STC RATING

55

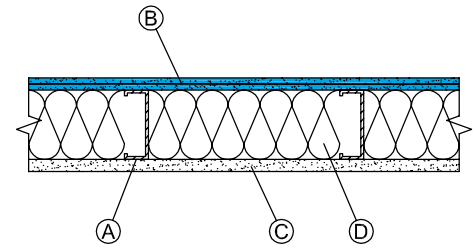
OL 15-0245

FIRE RATING

1 hr.

UL/cUL U465

GA WP 1081



A 3-5/8" [92 mm] 25 ga. steel studs 24" [610 mm] o.c.

ONE SIDE

B Base layer 5/8" [15.9 mm] CertainTeed Type X applied with 1" [25 mm] type S screws 12" [300 mm] o.c.

C Face layer 5/8" [15.9 mm] SilentFX®** applied with 1-5/8" [41 mm] type S screws 12" [300 mm] o.c.

OPPOSITE SIDE

D 5/8" [15.9 mm] SilentFX®** applied with 1" [25 mm] type S screws 12" [300 mm] o.c.

All joints staggered.

E 3-1/2" [90 mm] CertainTeed Thermal & Acoustical Fiber Glass Insulation or equivalent.

STC RATING

61

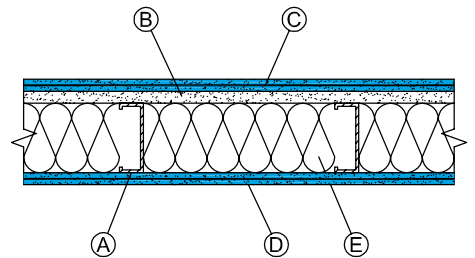
OL 11-0649

FIRE RATING

1 hr.

UL/cUL U465

GA WP 1081



A 3-5/8" [92 mm] 25 ga. steel studs 24" [610 mm] o.c.

ONE SIDE

B Base layer 5/8" [15.9 mm] SilentFX®** applied with 1-1/4" [32 mm] type S screws 12" [300 mm] o.c.

C Face layer 5/8" [15.9 mm] CertainTeed Type X applied with 1-5/8" [41 mm] type S screws 12" [300 mm] o.c.

OPPOSITE SIDE

D Base layer 5/8" [15.9 mm] CertainTeed Type X applied with 1-1/4" [32 mm] type S screws 12" [300 mm] o.c.

E Face layer 5/8" [15.9 mm] CertainTeed Type X applied with 1-5/8" [41 mm] type S screws 12" [300 mm] o.c.

All joints staggered.

F 3-1/2" [90 mm] CertainTeed Thermal & Acoustical Fiber Glass Insulation or equivalent.

STC RATING

60

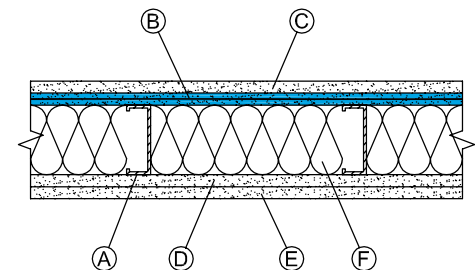
OL 10-1005

FIRE RATING

2 hr.

UL/cUL U411

GA WP 1524



A 3-5/8" [92 mm] 20 ga. steel studs 16" [406 mm] o.c.

ONE SIDE

B 5/8" [15.9 mm] SilentFX®** applied with 1-5/8" [41 mm] type S screws 12" [300 mm] o.c.

OPPOSITE SIDE

C 5/8" [15.9 mm] CertainTeed Type X applied with 1-5/8" [41 mm] type S screws 12" [300 mm] o.c.

All joints staggered.

D 3-1/2" [90 mm] CertainTeed Thermal & Acoustical Fiber Glass Insulation or equivalent.

STC RATING

48

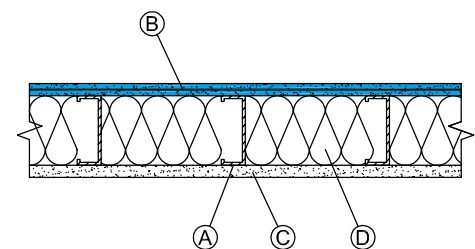
OL 11-0638

FIRE RATING

1 hr.

UL/cUL U465

GA WP 1081



A 3-5/8" [92 mm] 20 ga. steel studs 16" [406 mm] o.c.

ONE SIDE

B 5/8" [15.9 mm] SilentFX[®]** applied with 1-5/8" [41 mm] type S screws 12" [300 mm] o.c.

OPPOSITE SIDE

C 5/8" [15.9 mm] SilentFX[®]** applied with 1-5/8" [41 mm] type S screws 12" [300 mm] o.c.
All joints staggered.

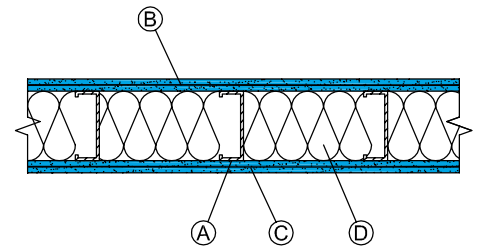
D 3-1/2" [90 mm] CertainTeed Thermal & Acoustical Fiber Glass Insulation or equivalent.

STC RATING

55
OL 11-0639

FIRE RATING

1 hr.
UL/cUL U465
GA WP 1081



A 3-5/8" [92 mm] 20 ga. steel studs 24" [610 mm] o.c.

ONE SIDE

B 5/8" [15.9 mm] SilentFX[®]** applied with 1-5/8" [41 mm] type S screws 12" [300 mm] o.c.

OPPOSITE SIDE

C 5/8" [15.9 mm] CertainTeed Type X applied with 1-5/8" [41 mm] type S screws 12" [300 mm] o.c.
All joints staggered.

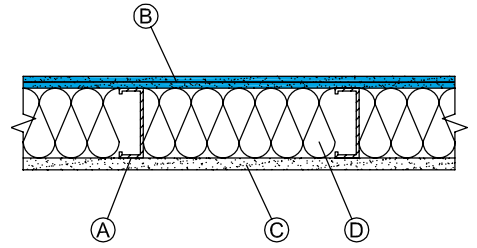
D 3-1/2" [90 mm] CertainTeed Thermal & Acoustical Fiber Glass Insulation or equivalent.

STC RATING

54
OL 11-0636

FIRE RATING

1 hr.
UL/cUL U465
GA WP 1081



A 3-5/8" [92 mm] 20 ga. steel studs 24" [610 mm] o.c.

ONE SIDE

B 5/8" [15.9 mm] SilentFX[®]** applied with 1-5/8" [41 mm] type S screws 12" [300 mm] o.c.

OPPOSITE SIDE

C 5/8" [15.9 mm] SilentFX[®]** applied with 1-5/8" [41 mm] type S screws 12" [300 mm] o.c.
All joints staggered.

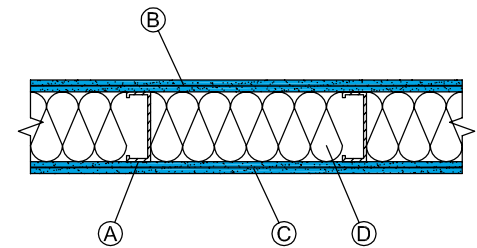
D 3-1/2" [90 mm] CertainTeed Thermal & Acoustical Fiber Glass Insulation or equivalent.

STC RATING

58
OL 11-0637

FIRE RATING

1 hr.
UL/cUL U465
GA WP 1081



A 3-5/8" [92 mm] 16 ga. steel studs 16" [406 mm] o.c.

ONE SIDE

B 5/8" [15.9 mm] SilentFX[®]** applied with 1-5/8" [41 mm] type S screws 12" [300 mm] o.c.

OPPOSITE SIDE

C 5/8" [15.9 mm] SilentFX[®]** applied with 1-5/8" [41 mm] type S screws 12" [300 mm] o.c.
All joints staggered.

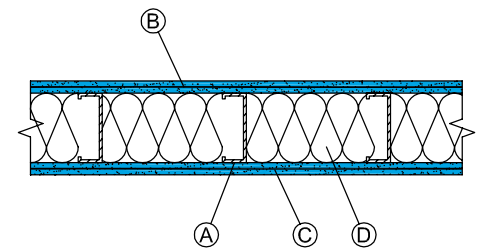
D 3-1/2" [90 mm] CertainTeed Thermal & Acoustical Fiber Glass Insulation or equivalent.

STC RATING

49
OL 11-0640

FIRE RATING

1 hr.
UL/cUL U465
GA WP 1081



A 6" [152 mm] 16 ga. steel studs 16" [406 mm] o.c.

ONE SIDE

B 5/8" [15.9 mm] SilentFX[®]** applied with 1-5/8" [41 mm] type S-12 screws 12" [300 mm] o.c.

OPPOSITE SIDE

C 5/8" [15.9 mm] CertainTeed Type X applied with 1-5/8" [41 mm] type S-12 screws 12" [300 mm] o.c.
All joints staggered.

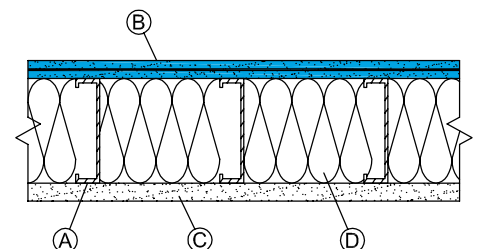
D 6" [152 mm] CertainTeed Thermal & Acoustical Fiber Glass Insulation or equivalent.

STC RATING

49
OL 11-0642b

FIRE RATING

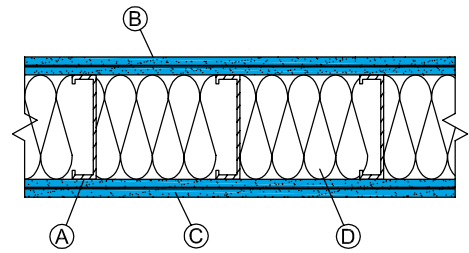
1 hr.
UL/cUL U465
GA WP 1081



- A** 6" [152 mm] 20 ga. steel studs 16" [406 mm] o.c.
- ONE SIDE**
- B** 5/8" [15.9 mm] SilentFX®** applied with 1" [25 mm] type S screws 12" [300 mm] o.c.
- OPPOSITE SIDE**
- C** 5/8" [15.9 mm] SilentFX®** applied with 1" [25 mm] type S screws 12" [300 mm] o.c.
All joints staggered.
- D** 6" [152 mm] CertainTeed Thermal & Acoustical Fiber Glass Insulation or equivalent.

STC RATING
55
OL 11-0644

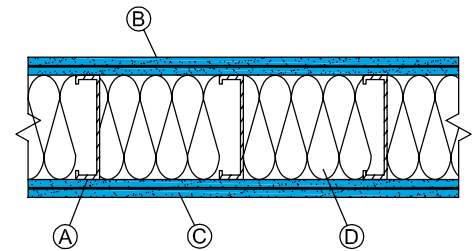
FIRE RATING
1 hr.
UL/cUL U465
GA WP 1081



- A** 6" [152 mm] 16 ga. steel studs 16" [406 mm] o.c.
- ONE SIDE**
- B** 5/8" [15.9 mm] SilentFX®** applied with 1-5/8" [41 mm] type S-12 screws 12" [300 mm] o.c.
- OPPOSITE SIDE**
- C** 5/8" [15.9 mm] SilentFX®** applied with 1-5/8" [41 mm] type S-12 screws 12" [300 mm] o.c.
All joints staggered.
- D** 6" [152 mm] CertainTeed Thermal & Acoustical Fiber Glass Insulation or equivalent.

STC RATING
53
OL 11-0643

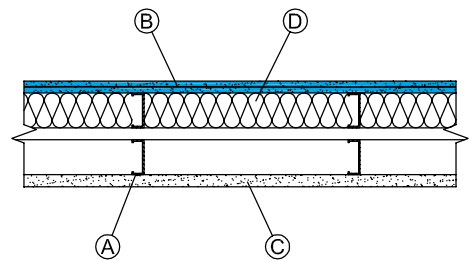
FIRE RATING
1 hr.
UL/cUL U465
GA WP 1081



- A** Double row 2-1/2" [63.5 mm] 25 ga. steel studs 24" [610 mm] o.c., in separate tracks with a 1" [25 mm] gap.
- ONE SIDE**
- B** 5/8" [15.9 mm] SilentFX®** applied with 1-1/4" [32 mm] type S screws 12" [300 mm] o.c.
- OPPOSITE SIDE**
- C** 5/8" [15.9 mm] CertainTeed Type X applied with 1-1/4" [32 mm] type S screws 12" [300 mm] o.c.
All joints staggered.
- D** 3-1/2" [90 mm] CertainTeed Thermal & Acoustical Fiber Glass Insulation or equivalent.

STC RATING
57
OL 10-1022

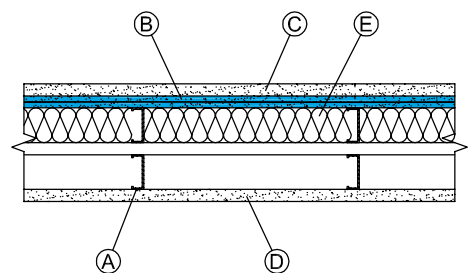
FIRE RATING
1 hr.
UL/cUL U420
GA WP 5015



- A** Double row 2-1/2" [63.5 mm] 25 ga. steel studs 24" [610 mm] o.c., in separate tracks with a 1" [25 mm] gap.
- ONE SIDE**
- B** Base layer 5/8" [15.9 mm] SilentFX®** applied with 1-1/4" [32 mm] type S screws 12" [300 mm] o.c.
- C** Face layer 5/8" [15.9 mm] CertainTeed Type X applied with 1-5/8" [41 mm] type S screws 12" [300 mm] o.c.
- OPPOSITE SIDE**
- D** 5/8" [15.9 mm] CertainTeed Type X applied with 1" [25 mm] type S screws 12" [300 mm] o.c.
All joints staggered.
- E** 3-1/2" [90 mm] CertainTeed Thermal & Acoustical Fiber Glass Insulation or equivalent.

STC RATING
63
OL 10-1023

FIRE RATING
1 hr.
UL/cUL U420
GA WP 5015



NOTES

SilentFX® QuickCut can be used as either the base or face layer in a multi-layer system without affecting the STC rating. Equivalent fiber glass insulations may be substituted for CertainTeed Insulation products.

*Systems tested for SilentFX® are also compatible for SilentFX® QuickCut.

Building Responsibly

CertainTeed respects the environment through the responsible development of sustainable building products and systems.

The building industry continues to look for ways to reduce impact on the environment while meeting customer demand for products that deliver beauty, comfort and performance.

CertainTeed's commitment to these goals is reflected here, highlighting our ongoing effort to become the preeminent supplier of green building materials.

Awareness of the importance of acoustics in sustainable construction continues to grow, and this is evident with the inclusion of sustainability requirements in many building programs and codes:

- LEED v4
 - EQ Prerequisite 3 - Schools Minimum Acoustic Performance
 - EQ Credit 9 Acoustic Performance
- Green Guide for Health Care
 - EQ Credit 9.1 Acoustic Environment
- 2015 International Green Construction Code (IgCC)
 - Section .3.3 Acoustical Control

Review systems performance information to see how SilentFX® QuickCut systems can help contribute to these sustainable programs.



The Health Product Declaration™ and logo is owned by the Health Product Declaration Collaborative™ and is used with permission.



SilentFX® QuickCut Noise-Reducing Gypsum Board is manufactured in nominal 1/2" (12.7 mm) and 5/8" (15.9 mm) Type X, 48" (1220 mm) width by 8' (2440 mm), 9' (2745 mm), 10' (3050 mm) and 12' (3660 mm) lengths.

Product Specifications

Product	Product Standards	Application Standards
1/2" SilentFX® QuickCut	ASTM C1396 and C1629	ASTM C840; GA-216
5/8" SilentFX® QuickCut Type X	ASTM C1396 and C1629	ASTM C840; GA-216
	1/2" (12.7 mm)	5/8" (15.9 mm) Type X
Widths	48" (1220 mm)	48" (1220 mm)
Standard Lengths*	8' (2440 mm)	8' (2440 mm)
	9' (2745 mm)	9' (2745 mm)
	10' (3050 mm)	10' (3050 mm)
	12' (3660 mm)	12' (3660 mm)
Weight	2.1 psf (10.3 kg/m ²)	2.8 psf (13.7kg/m ²)
Edges	Tapered	Tapered
Flame Spread	5	5
Smoke Developed	5	5
Mold Resistance Rating** (ASTM D3273)	10	10
Abuse Resistance Classifications (ASTM C1629)		
Surface Abrasion (D 4977)	2	2
Soft Body Impact (E 695)	1	1

The performance of SilentFX® QuickCut Noise-Reducing Gypsum Board in actual use may not accurately reproduce these ASTM laboratory test results. Good design and construction practices that prevent exposure of building products to water and moisture are the most effective strategy to avoid mold growth.

* Special lengths or edges may be available as a special order. Please contact your CertainTeed Representative.

Standard lengths may differ by region, please contact your sales rep for more information.

** No mold growth detected. Note: 10 is the best possible rating for ASTM D3273.

The Health Product Declaration™ and logo is owned by the Health Product Declaration Collaborative™ and is used with permission.



ASK ABOUT ALL OF OUR OTHER CERTAINTEED® PRODUCTS AND SYSTEMS:

ROOFING • SIDING • TRIM • DECKING • RAILING • FENCE
GYP SUM • CEILINGS • INSULATION

www.certainteed.com <http://blog.certainteed.com>

CertainTeed Corporation
 20 Moores Road
 Malvern, PA 19355
 Professional: 800-233-8990
 Consumer: 800-782-8777

©03/16 CertainTeed Gypsum.
 CTG-2856